

Plug In SpeedLight with adjustable tube, ribbed, removable teflon plate

ITEM # _____

MODEL # _____

NAME # _____

SIS # _____

AIA # _____


603946 (HSG2RPRSE3)

 SpeedLight with manual
adjustable top plate,
removable ribbed teflon
plate

Main Features

- It combines 3 cooking technologies: contact, infrared radiation and microwaves to provide perfectly cooked food, heated to the core.
- Manually adjustable upper plate to heat food up to a minimum height.
- The Energy Saving Mode automatically switches to stand-by after an amount of time settled by the operator (from 1 to 60 minutes).
- Delivered with USB port and wi-fi connection to optimize workflows allowing local and remote interaction (temperatures, countdowns, warnings).
- Electronic control with digital 4.3" LED display with adjustable brightness.
- 8 programs selectable on the display.
The 8 programs can be adjusted by the user. The programmable parameters are:
 - upper plate temperature
 - bottom plate temperature
 - total duration of each cycle
 - duration and distribution of microwaves within each cycle.
- Countdown display and buzzer with adjustable volume at the end of the cycle.
- Automatic mechanical lid holding and opening system controlled.
- Ergonomic handle for easy movement of the lid.
- Non-stick pressed tray to be used during all cooking cycles for maximum cleanability, meeting food contact requirements.
- Compliant with Regulation (EC) No 1935/2004 and its amendments, Regulation (EC) No 2023/2006 and its amendments.

Construction

- Aluminum ribbed top contact plate (215 x 215 mm) treated with a special non-stick coating.
- 2 temperature probes for an independent control of the top and bottom plate temperature.
- Smooth 4 mm thick quartz glass bottom cooking surface (250 x 250 mm).
- Independent temperature setting of the top and bottom plates from 50 to 250 °C.
- Automatic lifting of the lid at the end of the cooking cycle via mechanical spring.
- Lid covers, handle and side panels in high-grade reinforced composite material.
- 800W heating element on the top plate.
- 800W electrical armored heating element on the bottom plate.
- 2 x 1050W magnetrons for microwave.
- Front air inlet and back outlet for efficient cooling ventilation allows easy air filters removal and side by side installation.
- IPX4 water resistance certification.

User Interface & Data Management

- Connectivity ready for real time access to connected appliances from remote and data monitoring (requires optional accessory - contact the Company for more details).

APPROVAL: _____



Included Accessories

- 1 of Glass saver for SpeedDelight PNC 653527
- 1 of Cleaning brush for SpeedDelight PNC 653623
- 1 of Spatula for SpeedDelight PNC 653625
- 1 of 4 rubber feet - Height = 26 mm for SpeedDelight PNC 653792
- 1 of SpeedDelight spacer stop kit for rear ventilation PNC 653800
- 1 of Pressed non-stick tray PNC 653802
- 1 of Brush with nylon bristles PNC 653803
- 1 of Brush with brass bristles PNC 653804

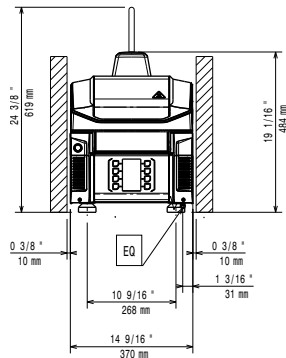
Optional Accessories

- Glass saver for SpeedDelight PNC 653527 ☐
- Cleaning brush for SpeedDelight PNC 653623 ☐
- Spatula for SpeedDelight PNC 653625 ☐
- Removable ribbed teflon plate for SpeedDelight PNC 653787 ☐
- 4 stainless steel feet - Height = 76 mm for SpeedDelight PNC 653791 ☐
- 4 rubber feet - Height = 40 mm for SpeedDelight PNC 653793 ☐
- SpeedDelight spacer stop kit for rear ventilation PNC 653800 ☐
- Pressed non-stick tray PNC 653802 ☐
- Brush with nylon bristles PNC 653803 ☐
- Brush with brass bristles PNC 653804 ☐

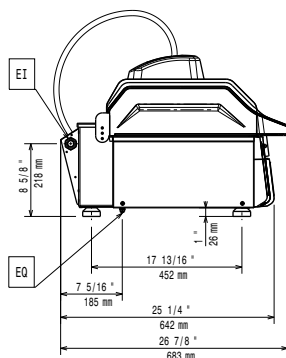
Recommended Detergents

- *NOT TRANSLATED* PNC 0S2292 ☐
- S02 DEGREASER 6pzx750ml - ADR&IMDG Limited Quantity PNC 0S2882 ☐

Front

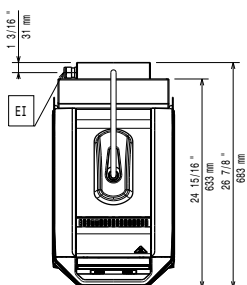


Side

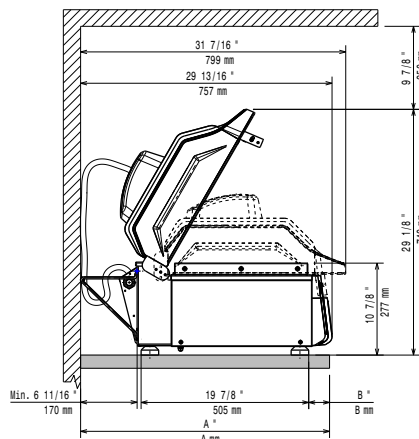


EI = Electrical inlet (power)
EO = Electrical Outlet

Top



Distances



Electric

| | |
|-----------------|-----------------------|
| Supply voltage: | 380-400 V/3N ph/50 Hz |
| Rated amps: | 9 A |
| Total Watts: | 5 kW |
| Plug type: | IEC 60309 3P+N+T |

Installation:

Clearance: 190mm from rear vertical panel

Key Information:

| | |
|------------------------------|---------------------|
| Cooking surface (WxD) | 250 x 250 mm |
| External dimensions, Width: | 370 mm |
| External dimensions, Depth: | 683 mm |
| External dimensions, Height: | 619 mm |
| Net weight: | 46 kg |
| Shipping weight: | 58 kg |
| Shipping height: | 710 mm |
| Shipping width: | 450 mm |
| Shipping depth: | 760 mm |
| Shipping volume: | 0.24 m ³ |